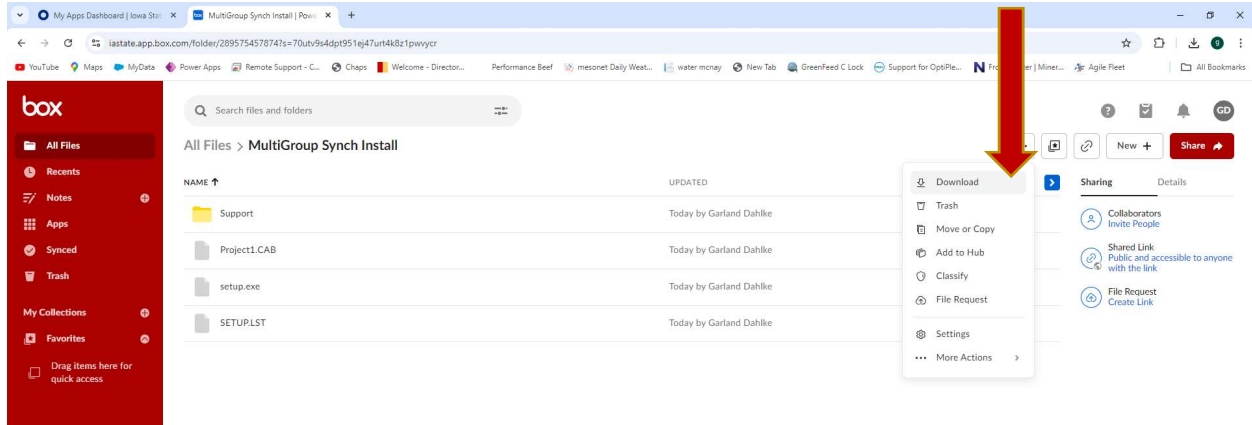
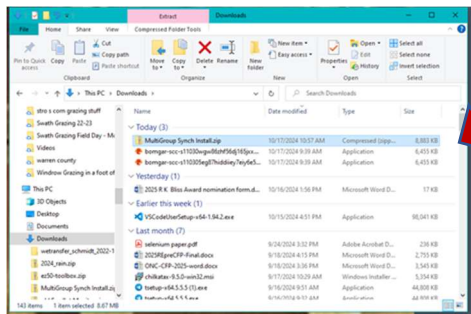


Installing and using the Multigroup Bovine Estrus Synch Planner

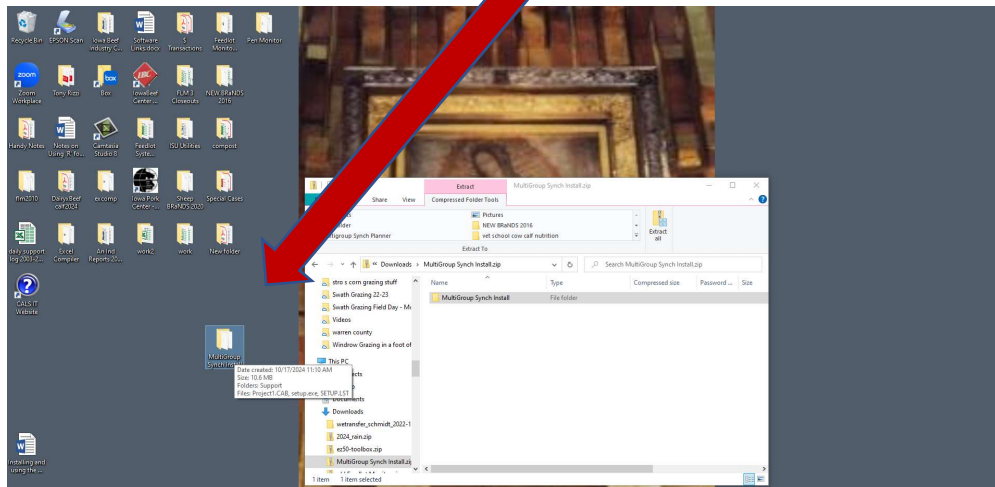
Step 1: DOWNLOAD. The link will take you to the page shown below. Select the box with the 3 dots in and from the menu that appears select DOWNLOAD



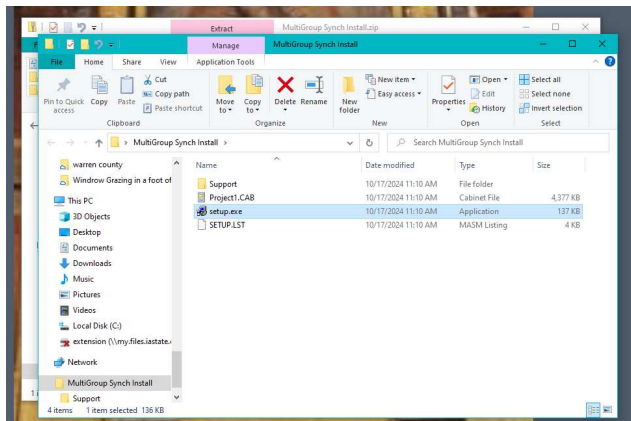
Step 2: Open the zipped downloaded folder (located in the DOWNLOADS folder) by double “clicking” it and place the folder inside of the zipped folder on your DESKTOP.



Zipped file
Opened by double clicking (shown in box below))
The Multigroup Synch Planner Install folder is then dragged onto the desktop



STEP 3: Open the Multigroup Folder on the desktop and double “click” the SETUP.EXE file to install.



STEP 4: Once Installed be sure to enable Macros to allow the program to work.

If you have difficulties contact Garland at the Iowa Beef Center 515 294 9910