

Importance of Cattle to Conservation and Community

Paul Lasley

Department of Sociology

Iowa State University

AGRI CULTURE

- Is it agriculture or agri culture
- The challenges of the food system are both technical and social in origin.
- The technical solution can not be adequately applied until there is consensus on the social issues.

Agriculture vs. Culture

Old paradigm

Agriculture and rural life were closely integrated. Most people who lived in rural America were associated with farming or agriculture. Bound together by common experiences, similar values and beliefs, shared culture, understanding and appreciation for raising crops and livestock

Agriculture vs. Culture

- New Paradigm

The majority of people living in rural America no longer are dependent upon farming for a living. They live in rural America for a variety of reasons, but not because they farm nor want to farm. Reasons for living in the country...open spaces, privacy, out doors experiences, quality of life. Guests of the country.

Rural Culture = Farming = Livestock

Farming was
synonymous with
rural culture; and
farming generally
included livestock

Rural Culture

*Non farm
communities*

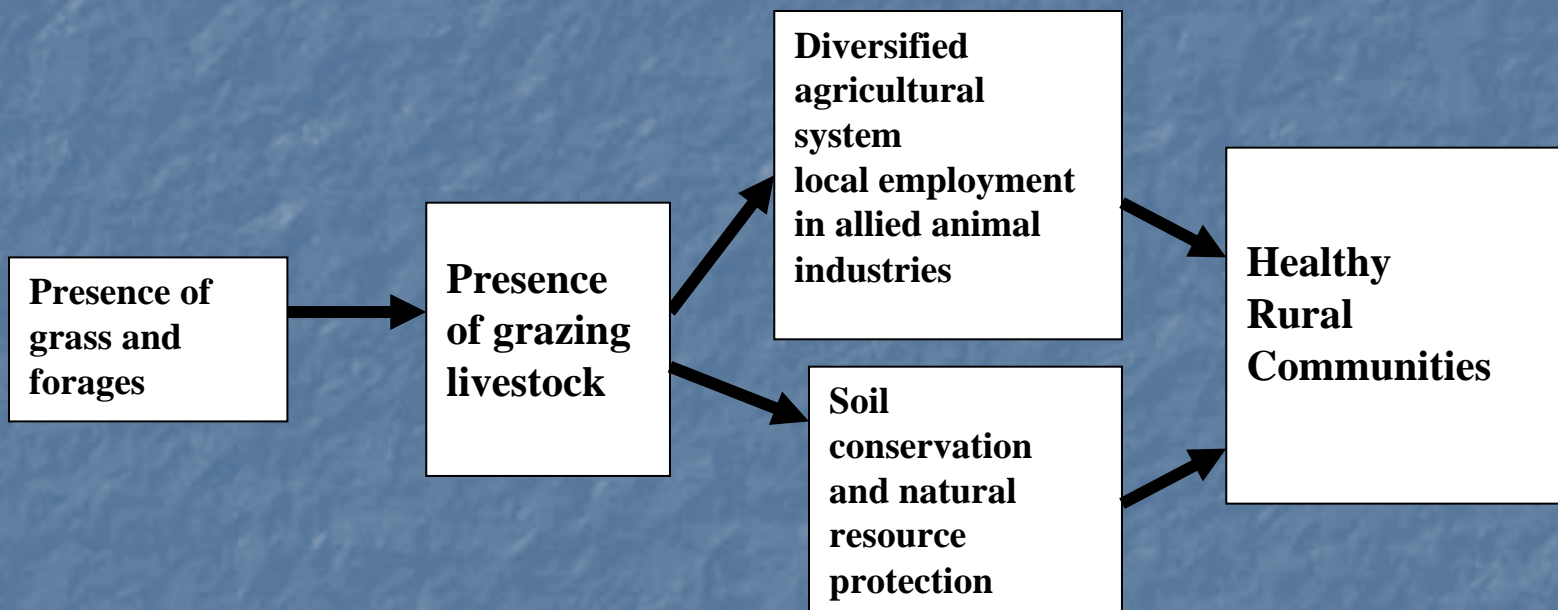
Agriculture

*Farm dependent
communities*

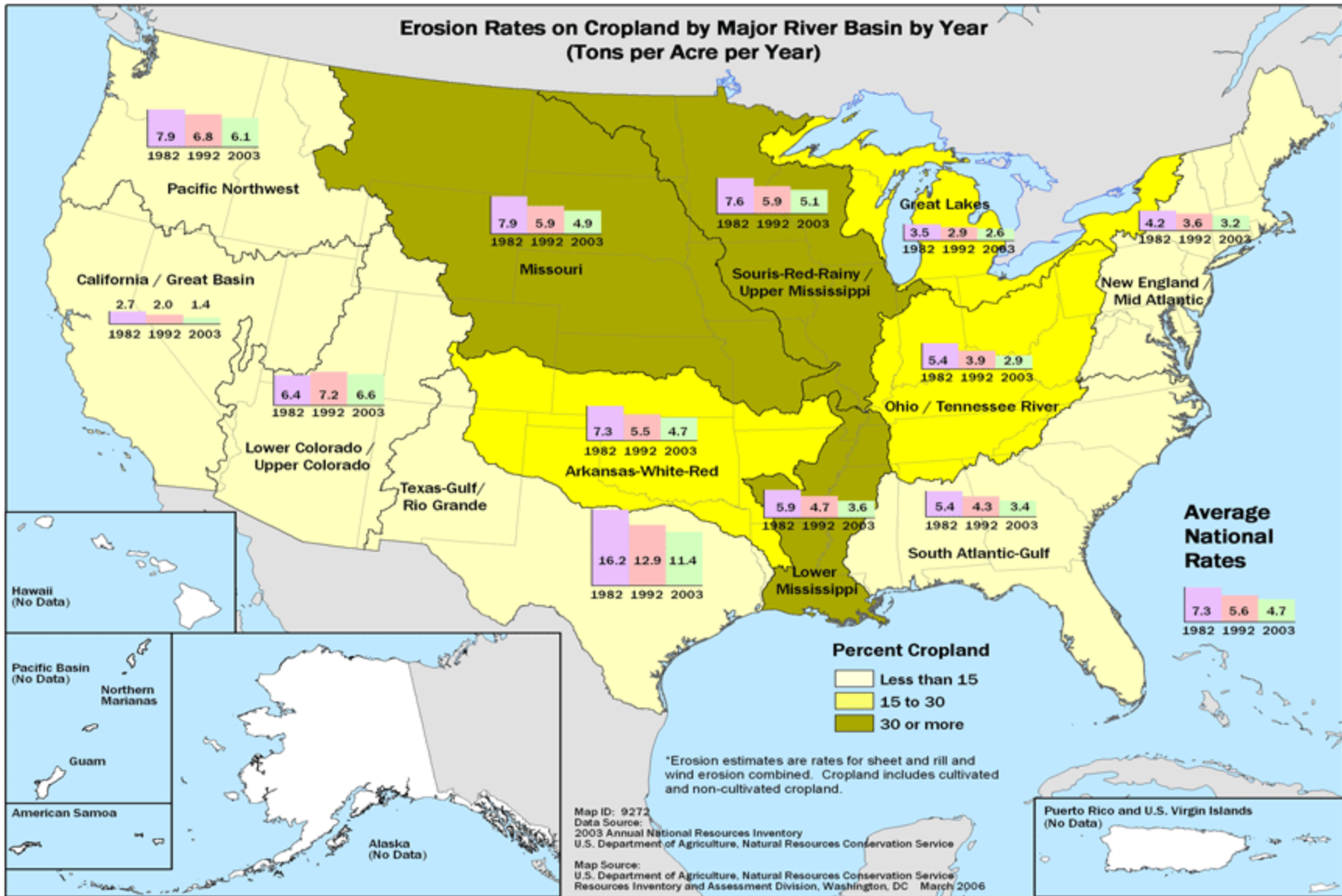
Why cattle are important to society?

- Source of meat
- Source of milk
- Leather and other products
- Importance of manure as soil additive
- Utilization of forages that can not be digested by humans
 - Hence there is a significant conservation benefit of grass and forage production on fragile soils
- Community Impacts
 - EMPLOYMENT

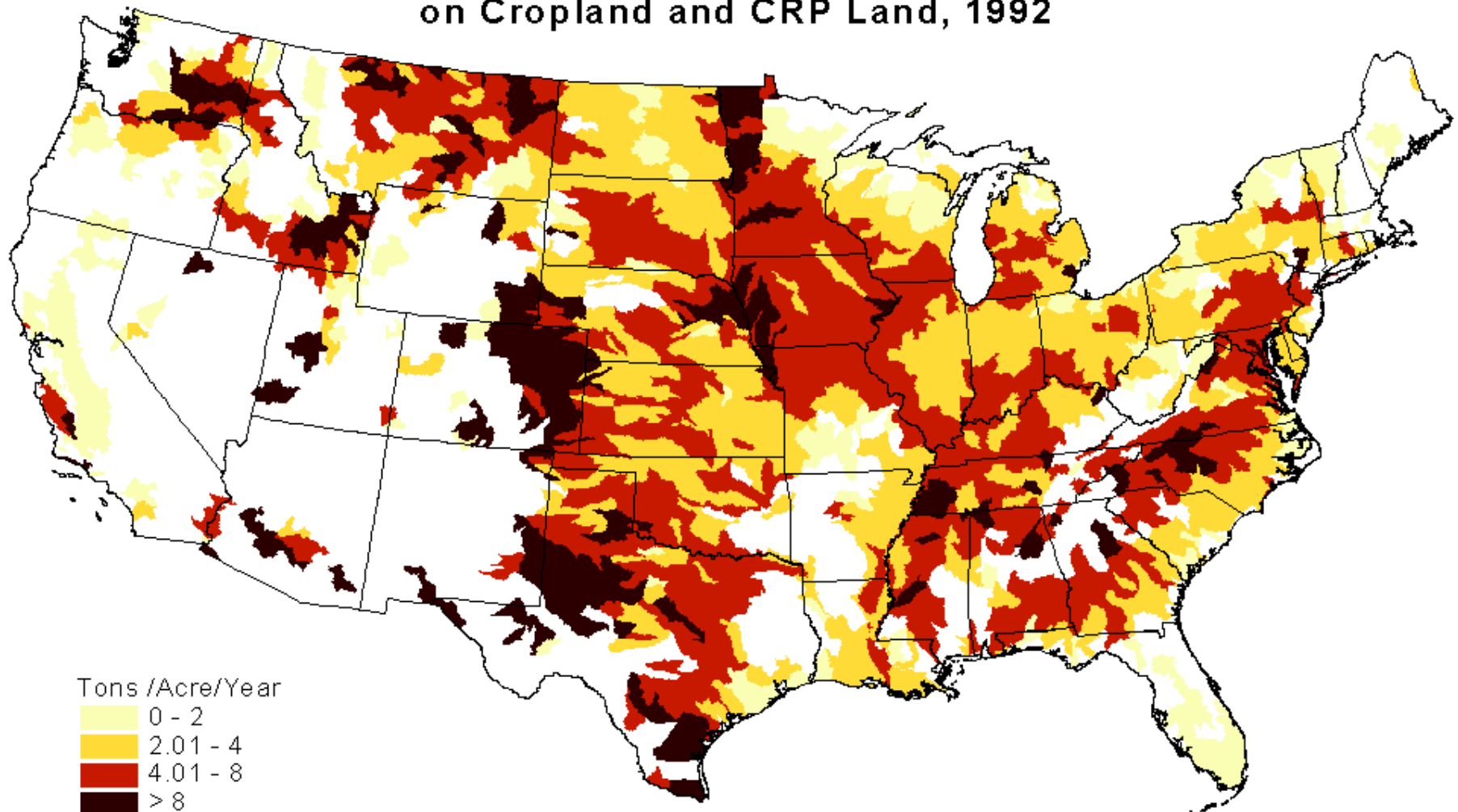
Source: Lasley, Hogberg, Helser and Larson in *Grassland: Quietness and Strength for a New American Agriculture*, 2008



Erosion Rates on Cropland by Major River Basin by Year (Tons per Acre per Year)



Average Annual Soil Erosion by Wind and Water on Cropland and CRP Land, 1992



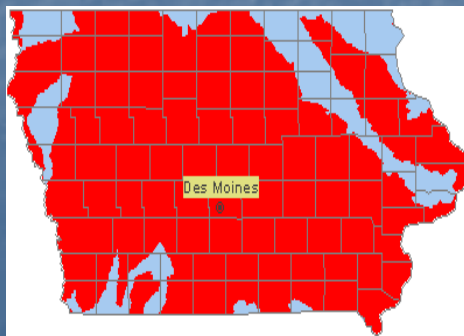
In Iowa...

Water quality:

- 200+ impaired water bodies
- Sediment is significant impairment



Average soil loss due to water erosion for cropland in Iowa is about 5 tons per acre.



Source: EPA

Climate change experts predict that weather patterns will become more erratic, including more rain events and more flooding that suggests more land protection measures will be needed, including more perennials and grasses

- 38% of the U.S. population lives within 65 miles of a sea coastline in 1994.
- 2.75 billion people live in coastal threat areas; global warming, sea level rise and hurricanes

(Center for Climate Systems Research of the Earth Institute at Columbia University)

Who should be encouraged to expand?

	<u>Yes</u>	<u>Maybe</u>	<u>No</u>
Local farmers			
Hogs	37	32	31
Cattle	49	31	20
Poultry	30	41	29
Nonfarm investors			
Hogs	8	16	76
Cattle	10	16	73
Poultry	8	18	74

Opinions about livestock

Agree

Not
Sure Disagree

If people choose to live
in the country then they
should accept the presence
of livestock

85

3

11

I don't care whether my
neighbor raises livestock, as
long as this doesn't affect
my quality of life

83

7

10

	<u>Agree</u>	<u>Not Sure</u>	<u>Disagree</u>
Increasingly, livestock odors and noise are major problems throughout the state	64	17	19
Most livestock producers do a good job of controlling odors and noises from their livestock operation	71	10	19

Will expansion of the livestock provide more jobs
for local people?

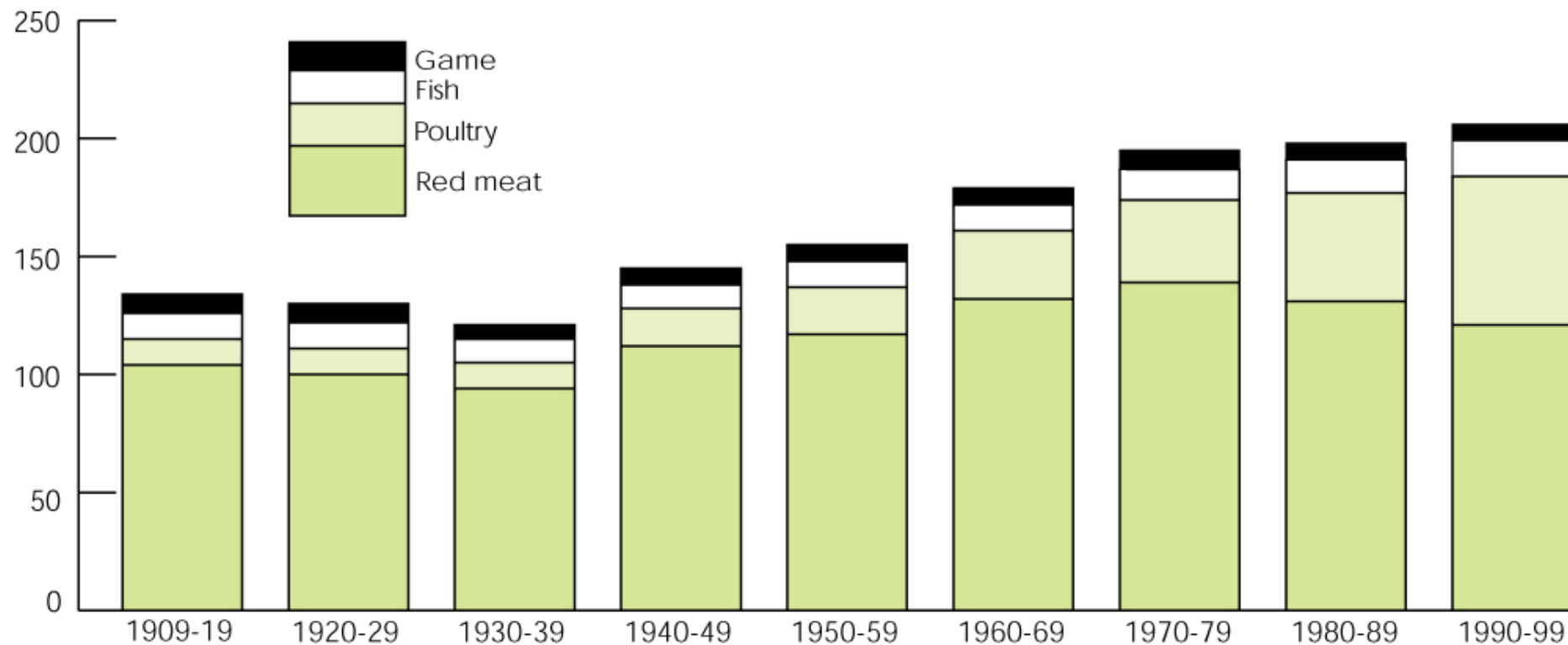
27% Yes

29% Not sure

44% No

Figure 5
Total Meat Consumption

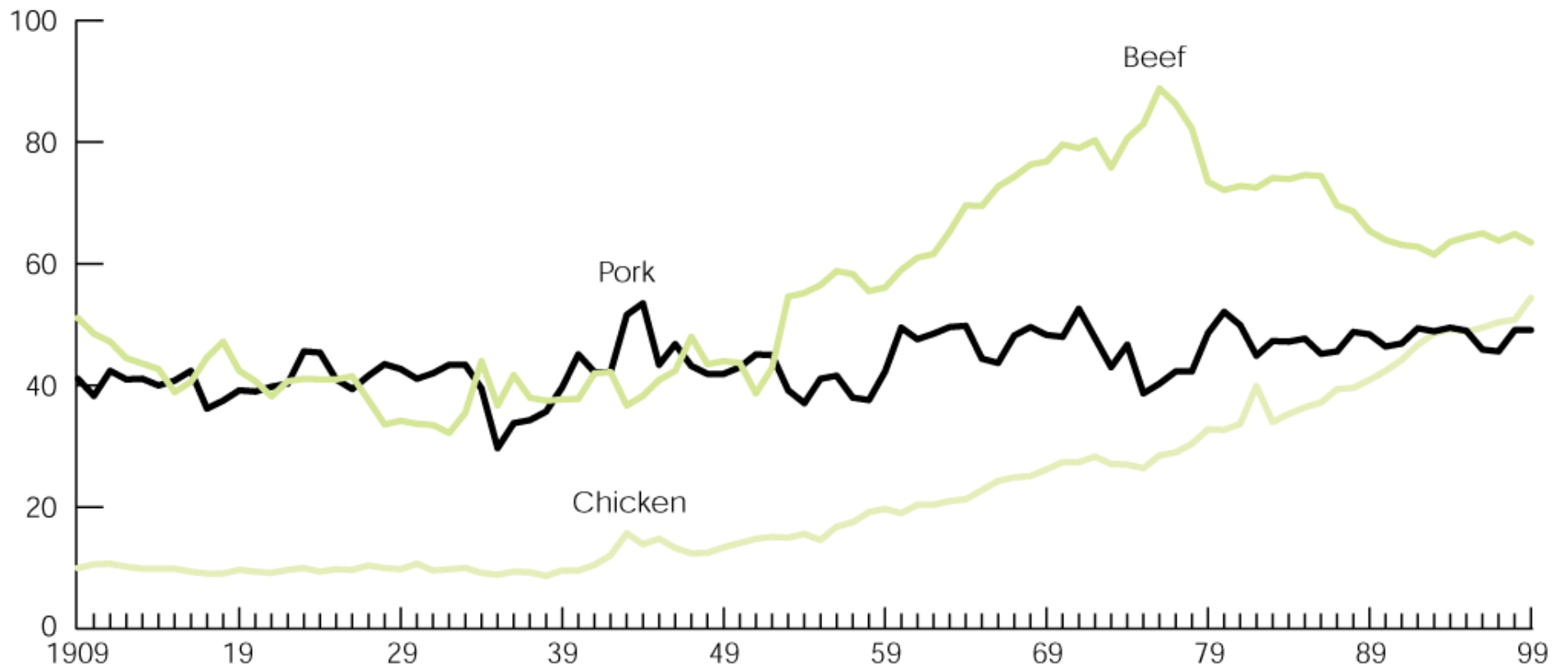
Pounds per capita, annual average¹



¹Boneless, trimmed weight. Includes organ meats.
Source: USDA's Economic Research Service.

Figure 6
Beef, Pork, and Chicken Consumption

Pounds per capita¹



¹Boneless, trimmed weight. Excludes beef and pork organ meats.
Source: USDA's Economic Research Service.

Increased Societal Expectations for Agriculture

- Source of:
 - Food, fuel, feed, fiber
- Global competition requires keeping production costs low
- Demonstrate environmental stewardship
- Create local jobs and
- Assist in rural development

Emergence of New Food System

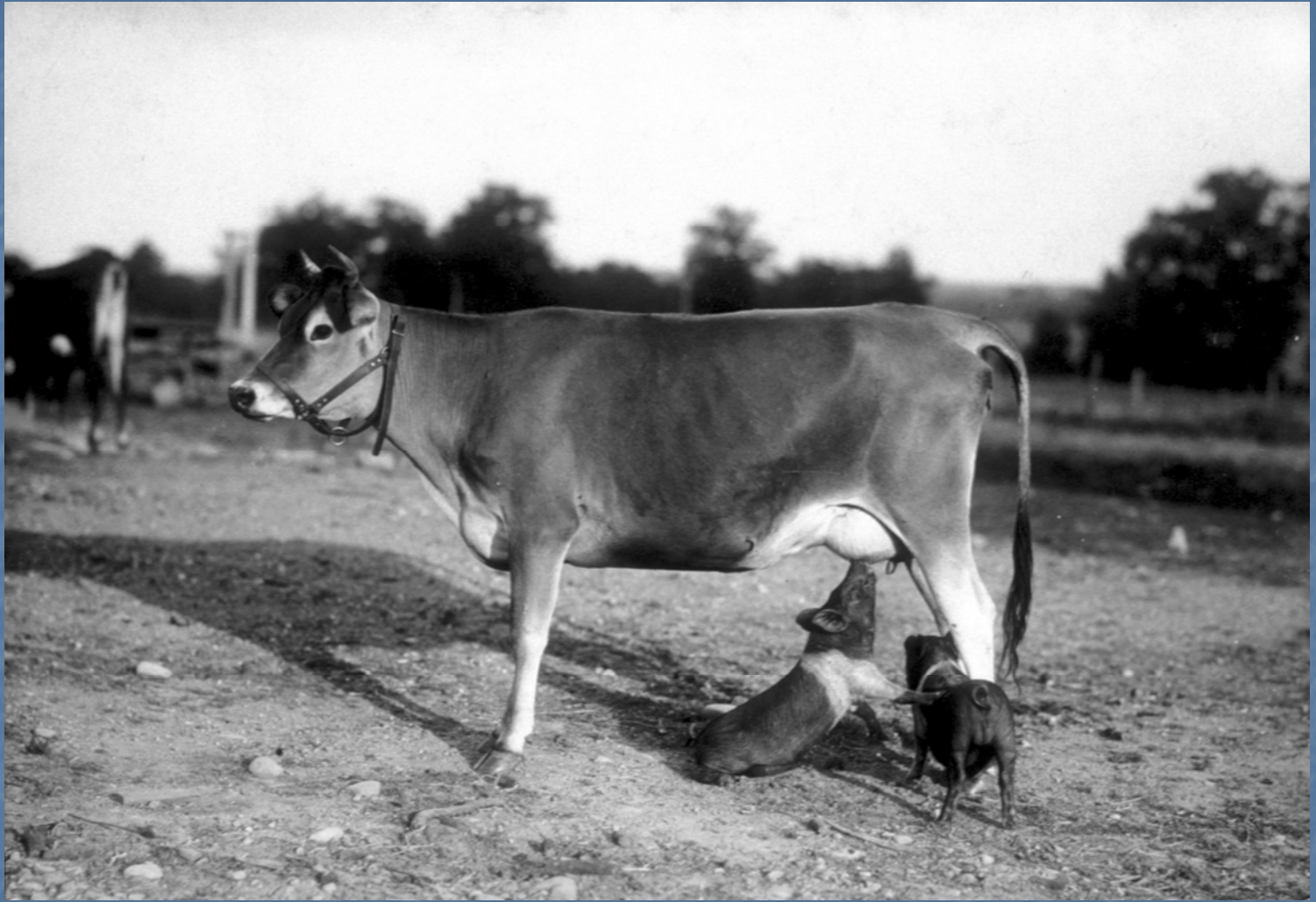
- More attention to place of origin
 - Where their food comes from
- Reconnecting producers and consumers
 - Food with a face, CSAs, farmers markets
 - Local food system
 - Green movement
- Understanding the modern food production and processing system
 - Knowledge is power.

Even though the **structure** has changed the primary **function** of agriculture has not changed

- Produce food
- Produce feed for animals
- Produce fuel
- Produce fiber

These functions are accomplished by:

GROWING PLANTS and **RAISING LIVESTOCK**



THANK YOU