

# Feedlot expansion and integration with rapidly changing agriculture in central Brazil



**Dan Loy and Erika Lundy**  
IOWA STATE UNIVERSITY  
Extension and Outreach  
Iowa Beef Center

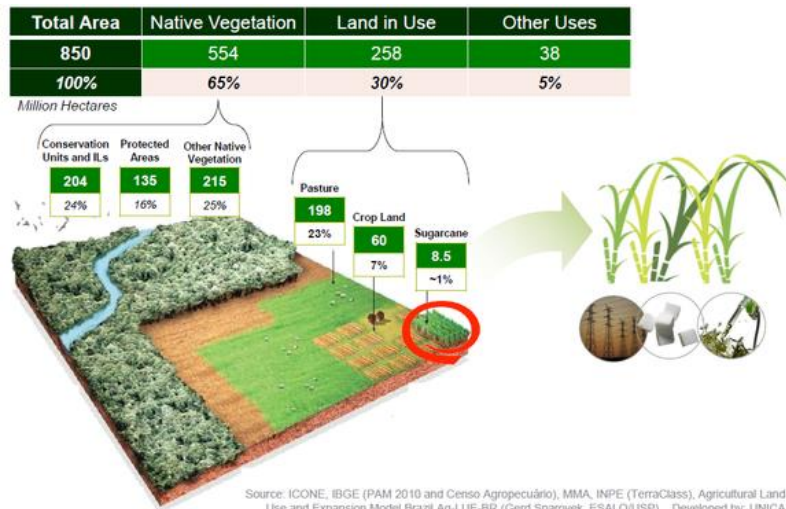


## What we can learn from a rapidly growing, immature beef industry...

*And what they can learn from us.*

- Brazil and beef production
- Brazil and grain production
- Livestock and crop integration
- Feedlot production marketing

IOWA STATE UNIVERSITY  
Extension and Outreach  
Iowa Beef Center



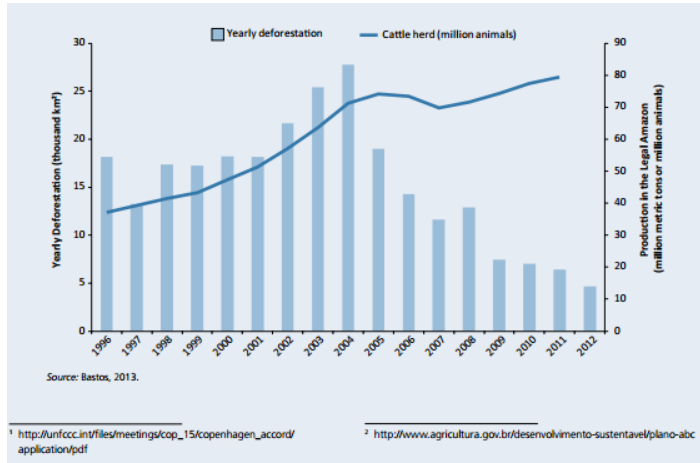
IOWA STATE UNIVERSITY  
Extension and Outreach  
Iowa Beef Center



Brazil's "Forest Code":  
20-80% of each farm  
must be conserved in  
forest, depending on  
the region.

**IOWA STATE UNIVERSITY**  
Extension and Outreach  
Iowa Beef Center

### Cattle herd and deforestation in Brazil



**IOWA STATE UNIVERSITY**  
Extension and Outreach  
Iowa Beef Center

# 1,000 miles in 3 days



IOWA STATE UNIVERSITY  
Extension and Outreach  
Iowa Beef Center

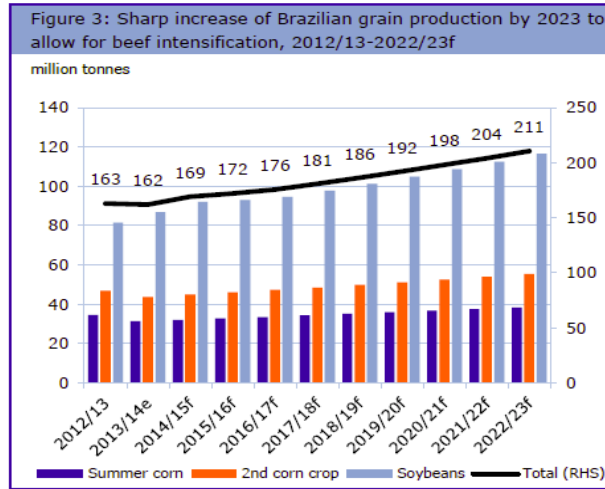
## Infrastructure

Highway 163

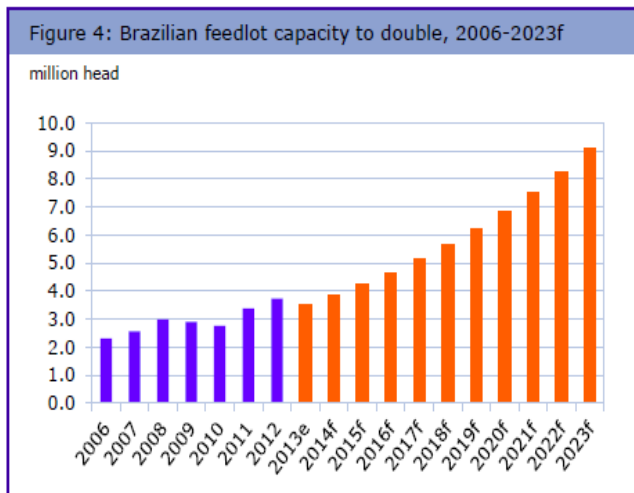
10,000 TRUCKS PER DAY



Corn basis FOB  
Sao Paulo ports=  
\$3.00



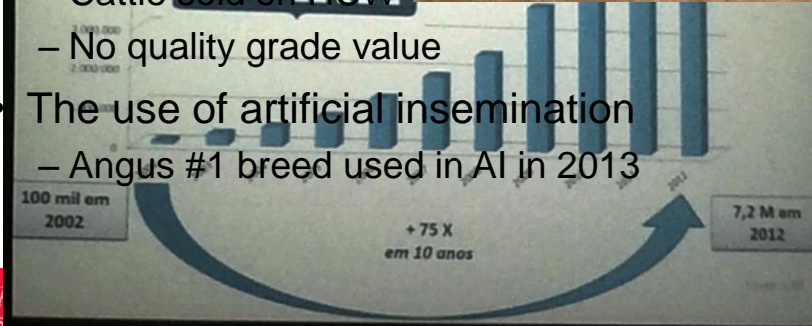
IOWA STATE UNIVERSITY  
 Extension and Outreach  
 Iowa Beef Center



IOWA STATE UNIVERSITY  
 Extension and Outreach  
 Iowa Beef Center

## The Cattle

- Nellore breed
  - 36 months of age
  - 1100-1200 lbs FBW
  - Cattle sold on HCW
  - No quality grade value
- The use of artificial insemination
  - Angus #1 breed used in AI in 2013



Iowa  
Extens  
Iowa Beef Center

## Braganca Feedlot

(Lucas do Rio Verde, MT)

- 2013 Nelson Pineda National Award Winner for most efficient feedlot
- 25,000 head per year planning to expand to 50,000 next year
- Integrated crop-livestock farm with corn-soybeans and edible beans.
- Excellent nutrition, data management, animal health





**Paulo Roberto Parron, DVM**



**IOWA STATE UNIVERSITY**  
Extension and Outreach  
Iowa Beef Center



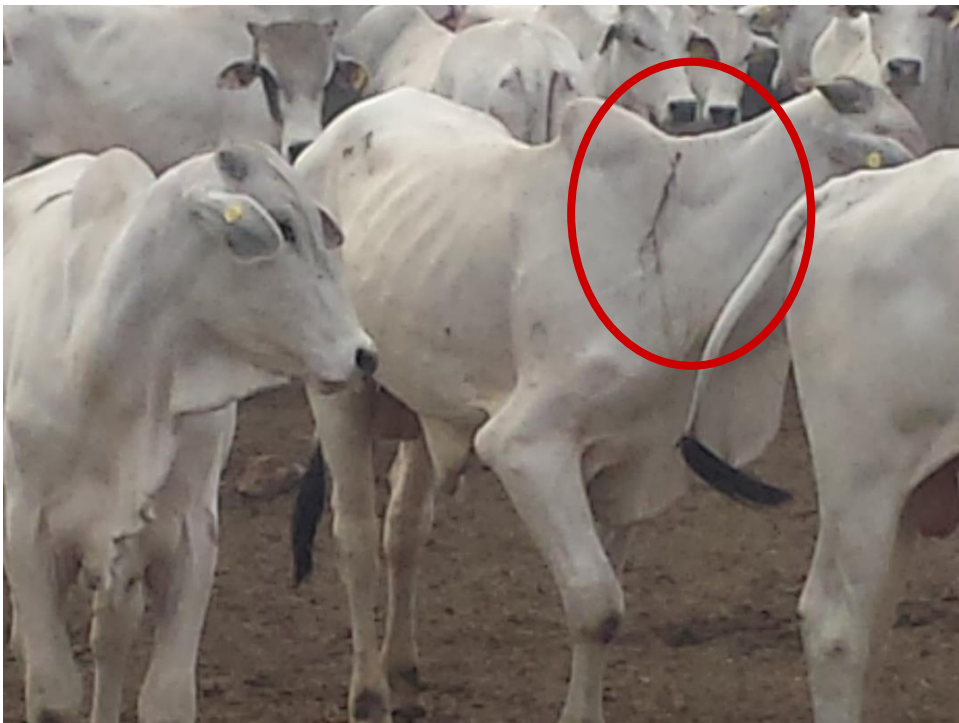
IOWA STATE UNIVERSITY  
Extension and Outreach  
Iowa Beef Center



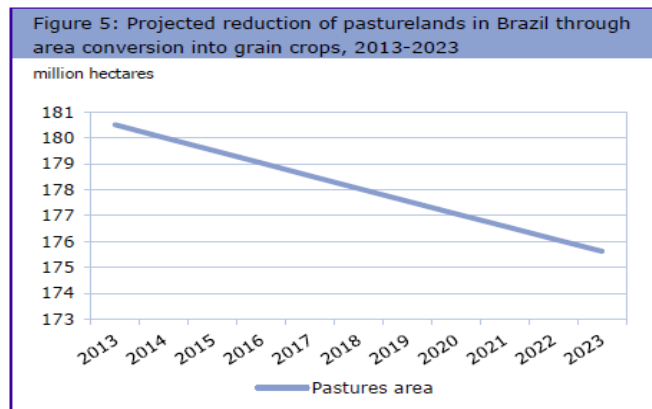
## The ideal Nellore

IOWA STATE UNIVERSITY  
Extension and Outreach  
Iowa Beef Center





## Intensification of cow herds and integration with crop rotations



IOWA STATE UNIVERSITY  
Extension and Outreach  
Iowa Beef Center

## Agropecuarias Mafra e Propecus - Elder Bruno

- 44,000 ha: 12-15,000 in crops and 3,000 ha perm pasture
- Goal = 22,000 ha crop system
- Transitional rainforest area so 50% must be in forest
- 9,000 cows; 5,000 hd feedlot
- Crossbreeding, retained ownership, innovative crop-cow herd integration through crop rotations and cover crops

IOWA STATE UNIVERSITY  
Extension and Outreach  
Iowa Beef Center

## Crop rotations Mafra e Propecus

- Three cropping systems:
  - 1) Soybeans-annual tropical grass-millet
  - 2) Soybeans-corn-annual tropical grass
  - 3) Soybeans-grass (panicum) for 3 years then back to 1 or 2.



## Crop rotations Mafra e Propecus

- 4,000 cows fixed time AI
- Reproductive data
  - 60% success timed AI
  - 92% weaning rate, 5% jaguars







IOWA STATE UNIVERSITY  
Extension and Outreach  
Iowa Beef Center

## **Bortoluzi Farm (Matupa)**

- 25,000 hd/year
- Also planning to double next year
- 9 months of rainy season
- Very interested in managing mud

IOWA STATE UNIVERSITY  
Extension and Outreach  
Iowa Beef Center





## Fazena Mirante Feedlot

- Goiania (Goias State)
- Poorer soils, less farming
- Sorghum, corn silage, cottonseed, tomato waste
- Custom feedlot
- Test lot for GA feedlot software
- “Most photogenic” feedlot in Brazil









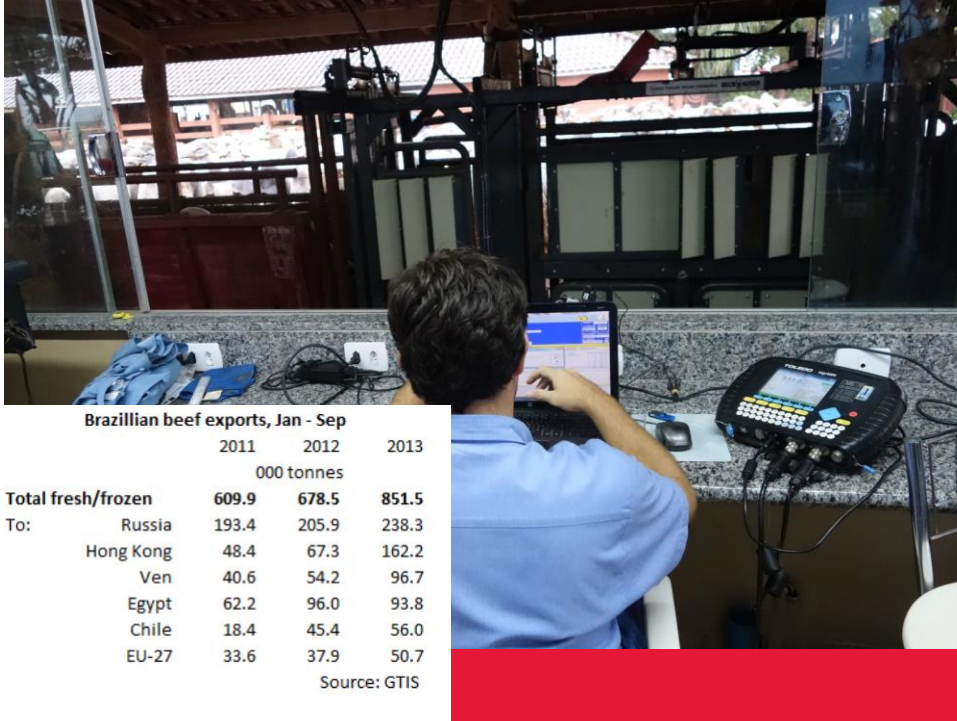
**Brazilians consume 80% of production**



IOWA STATE UNIV  
Extension and Outreach  
Iowa Beef Center



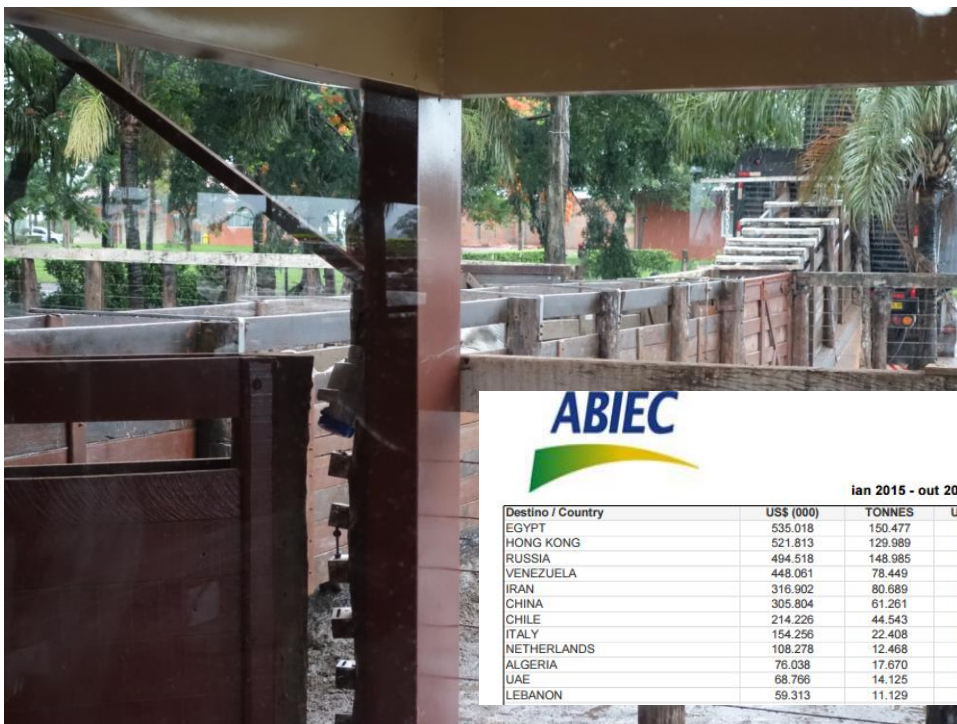
IOWA STATE UNIVERSITY  
Extension and Outreach  
Iowa Beef Center



**Brazilian beef exports, Jan - Sep**

	2011	2012	2013
	000 tonnes		
<b>Total fresh/frozen</b>	<b>609.9</b>	<b>678.5</b>	<b>851.5</b>
To:			
Russia	193.4	205.9	238.3
Hong Kong	48.4	67.3	162.2
Ven	40.6	54.2	96.7
Egypt	62.2	96.0	93.8
Chile	18.4	45.4	56.0
EU-27	33.6	37.9	50.7

Source: GTIS



**ABIEC**

Jan 2015 - out 201

Destino / Country	US\$ (000)	TONNES	US
EGYPT	535.018	150.477	3
HONG KONG	521.813	129.989	4
RUSSIA	494.518	148.985	3
VENEZUELA	448.061	78.449	5
IRAN	316.902	80.689	3
CHINA	305.804	61.261	4
CHILE	214.226	44.543	4
ITALY	154.256	22.408	6
NETHERLANDS	108.278	12.468	6
ALGERIA	76.038	17.670	4
UAE	58.766	14.125	4
LEBANON	59.313	11.129	5

# Defining sustainability



Global Roundtable for Sustainable Beef

Email:   
 Password:   
 Remember me  
[Login](#) [Forgot password](#)

**HOME**

- 2014 GLOBAL CONFERENCE ON SUSTAINABLE BEEF
- PRINCIPLES & STRATEGIES FOR SUSTAINABLE BEEF
- MEMBERS
- SHIP
- UPCOMING EVENTS
- ABOUT SUSTAINABLE BEEF
- CONTACT

**2014 Global Conference on Sustainable Beef**  
 SUSTAINABLE BEEF: BUILDING A VISION FOR OUR FUTURE  
 November 2-5, 2014 • São Paulo, Brazil • WTC Events Center

Co-hosted by  
 Global Roundtable for Sustainable Beef and GTPS, the Brazilian Roundtable on Sustainable Livestock

**GTPS**  
 Grupo de Trabalho da Pecuária Sustentável  
 Brazilian Roundtable on Sustainable Livestock

**Major Supporters of the 2014 Global Conference on Sustainable Beef**



## **Can the US and Brazil provide beef for a hungry world?**

- Competition
- Communication
- Cooperation



# IFBF Brazil Market Study Tour



# The IFBF Group



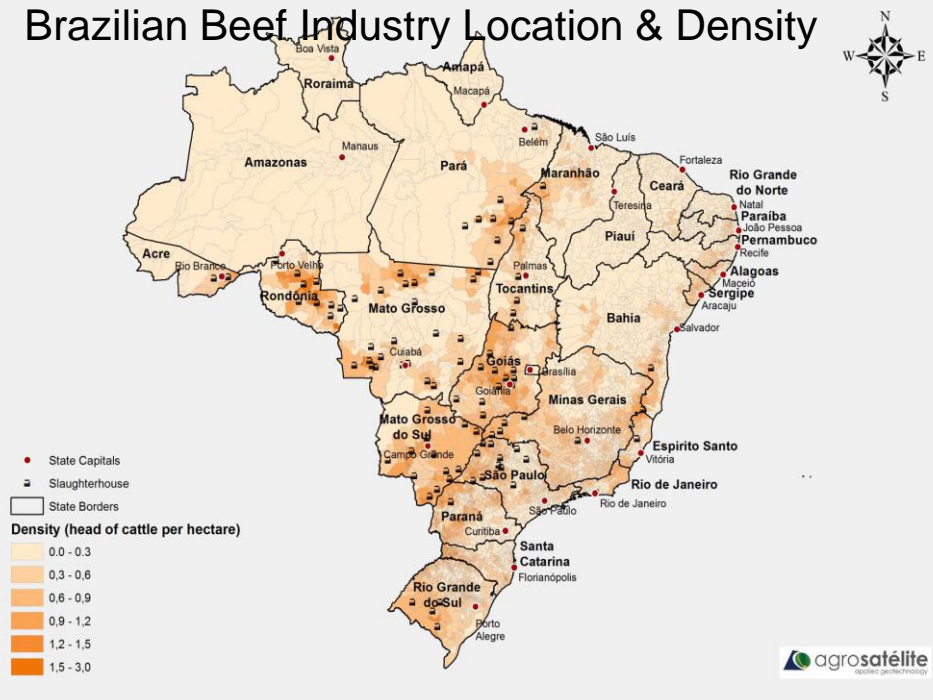
# Global Ranking of Brazilian Production and Exports

Main Products	Global Ranking		World Comercial share
	Production	Exports	
Orange Juice	1º	1º	77%
Sugar	1º	1º	45%
Coffee	1º	1º	28%
Beef	2º	1º	22%
Chicken	2º	1º	35%
Soybeans	2º	2º	39%
Corn	3º	2º	17%
Soybean oil	4º	2º	12%
Soybean meal	4º	2º	22%
Pork	4º	4º	10%
Cotton	5º	3º	10%

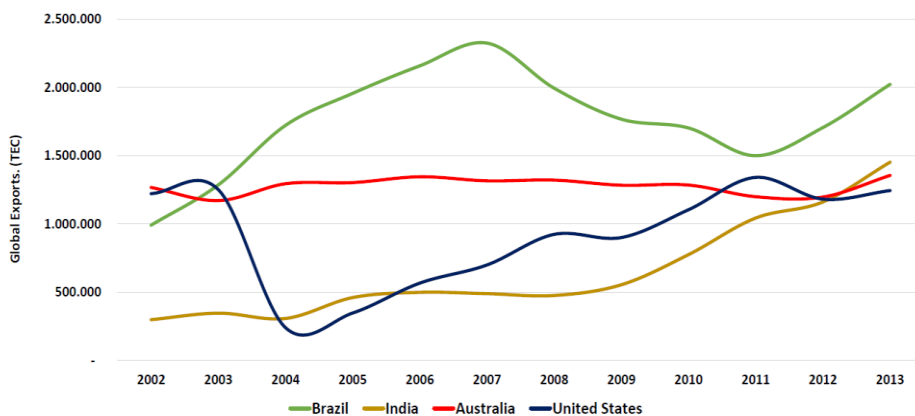
Source: USDA ; Estimation of 2014 and 2015



## Brazilian Beef Industry Location & Density



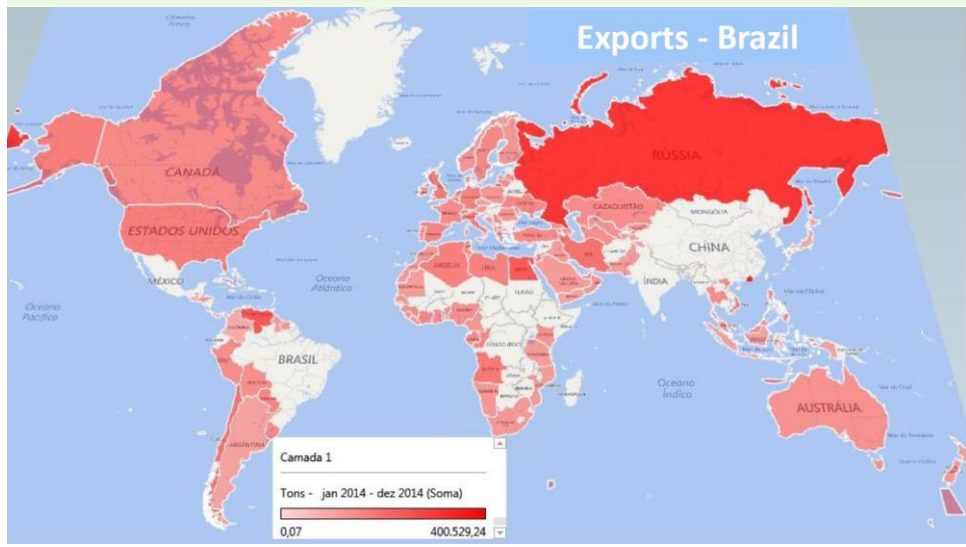
## GLOBAL BEEF EXPORTS Yearly

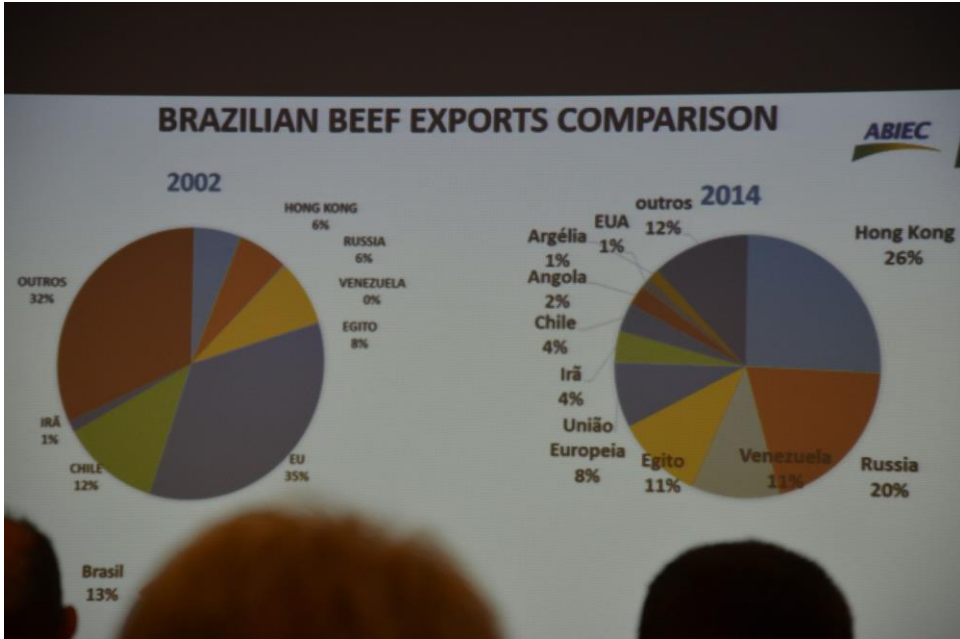


- 5 million cattle farms; 208 million head inventory;
- 43 million head annual slaughter; 521 lb avg carcass
- 10.2 million tons beef; 80% domestic consumption; 20% export



## Brazilian Beef Export Footprint







## Quality Breeding Stock



## Alta Genetics Facility





## Brazilian Beef Industry Facts

- Angus is #1 breed for semen sales in Brazil.
- Live carcass weight of 350 kg.
- 70-80% of beef produced in Brazil is consumed in Brazil.
- Panacum is the main grass; grow to 35 inches and graze down.
- Average herd size is 600 head; a good life is 1,500 head.

# Lush Pastures



# Pasture & Grass Research



## Grid Sampling Pastures



## Integrated Forestry & Beef



# Integrated Forestry & Beef

- Eucalyptus trees are harvested at 12 years of age.
- The trees reduce grass production by 12% but the profitability of wood production easily offsets the decreased grass production.
- The middle row in the row of three produces straight trees and thus wood that is good enough quality for furniture and the other trees are sold for paper products.
- Rows of 1 tree are not profitable enough to offset the loss of grass production.



## Nelore Cattle





## Zebu & English Crossbreds



## Crossbreds in a feedlot



## Soybeans and Sugarcane in the background of the feedlot



## JBS "Swift Black" Feedlot







## Integrating Corn, Pasture & Beef



10 miles of this road to get to the farm



Working Corral



Recently Weaned Calves



## Water Tower for Farm Supply



## Housing for Farm Employees



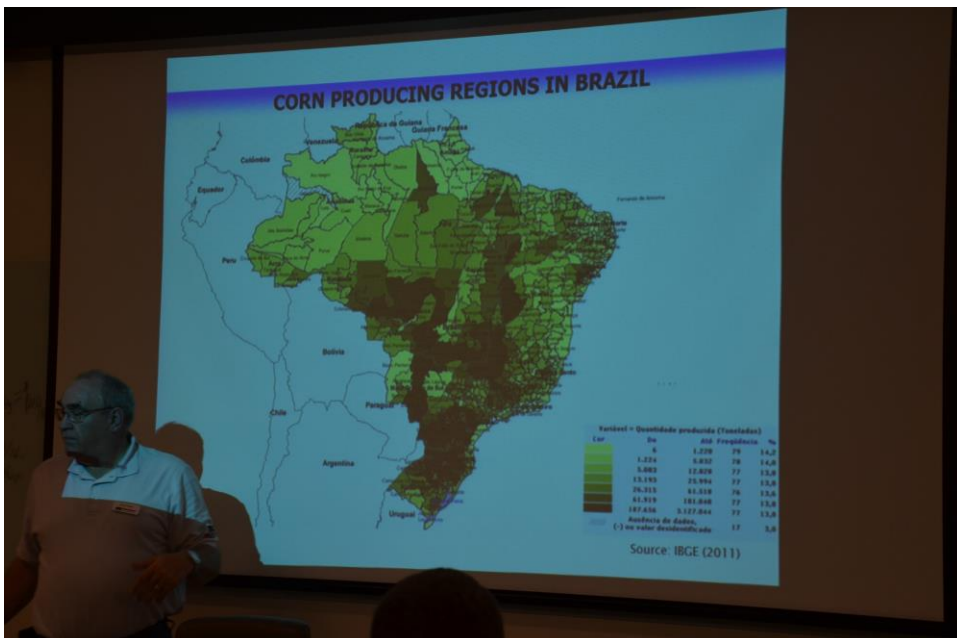
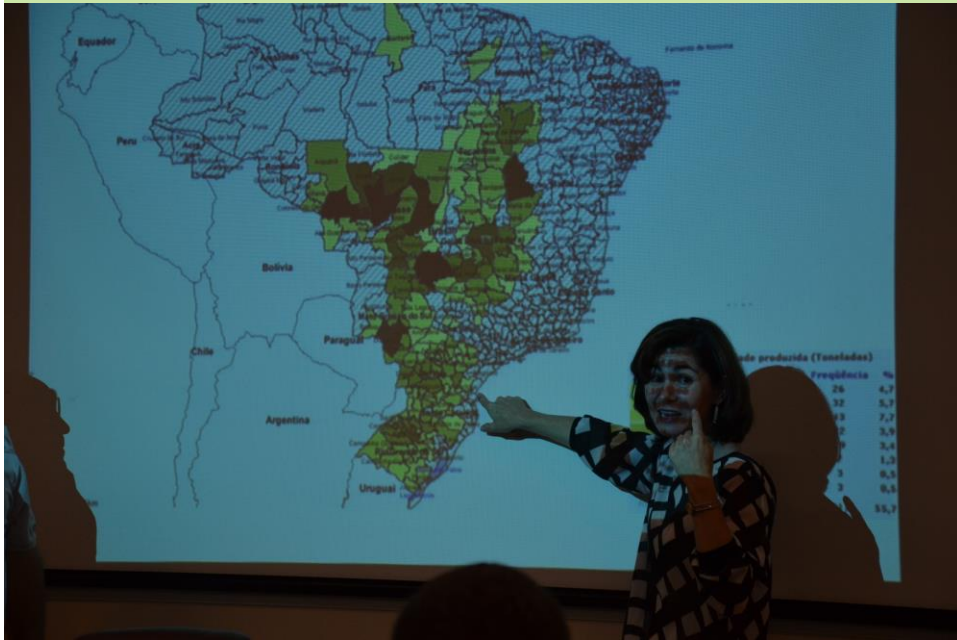


Waygu Beef Farm near Sao Paulo



Mato Grosso do Sul

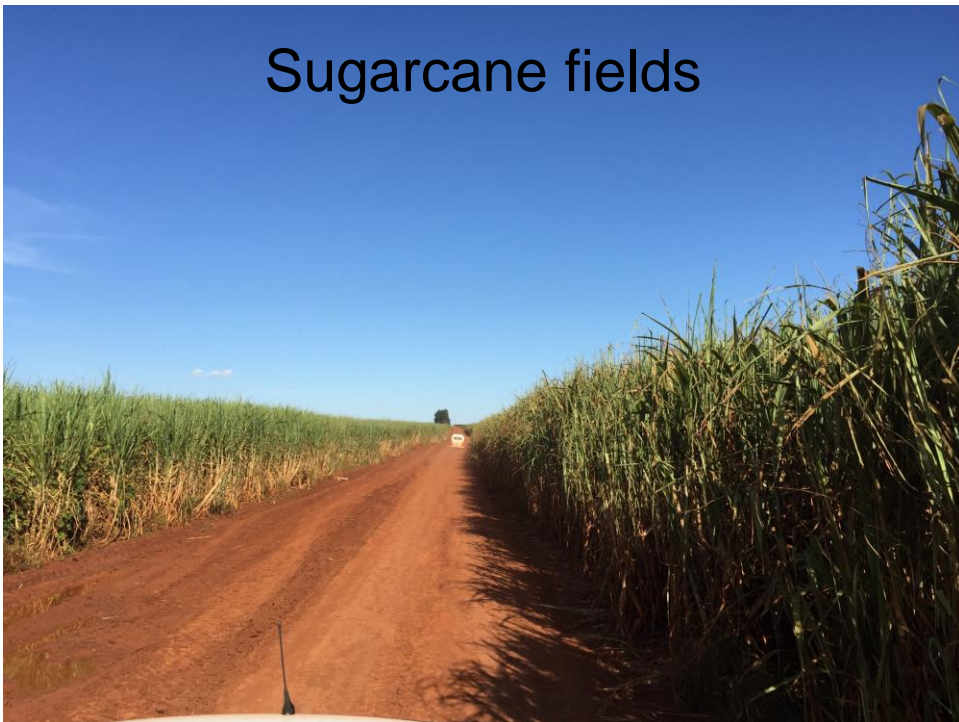
# Major Soybean Production Areas in Brazil



## Grain Cleaning



## Sugarcane fields





## Conclusions

- Brazil – Great Potential, but.....
  - Infrastructure issues
  - Cultural issues
  - Political issues
  - Industry structure





Questions?

